

SEAT ROW PLACARDS INSTALLATION

		MANUFACTURING TOLERANCES: UNITS: DIMENSIONS IN MILLIMETERS ANGLES: IN DEGREES	
SCALE: 1:1	SIZE: A2	PROJECTION: FIRST ANGLE	SHEET NO: 3 OF 3
TITLE: SEAT ROW PLACARD INSTALLATION	DRAWN BY: EDVINS	CHECKED BY: MAKSIM J	REV: A
AIRCRAFT: AIRBUS A320-200	DRAWING NUMBER: AVE113JCEE0440	REGISTRATION: LY-VEL	SHEET 3 OF 3
PHONE: +381 13 749748 WWW.JANDCENGINEERING.COM	TITLE: SEAT ROW PLACARD INSTALLATION	REGISTRATION: LY-VEL	SHEET 3 OF 3

THIRD ANGLE PROJECTION DO NOT SCALE ALL DIMENSIONS IN INCHES UNLESS OTHERWISE STATED

NOTES: UNLESS OTHERWISE SPECIFIED

1. AISLE WIDTHS MUST MEET THE REQUIREMENTS SET FORTH IN JAR 25.815.
2. EMERGENCY EXITS MUST BE ACCESSIBLE PER JAR 25.813 UNLESS DEVIATION GRANTED.
3. "FASTEN SEAT BELT" AND "NO SMOKING" SIGNS MUST BE VISIBLE WHEN ILLUMINATED TO EACH PERSON SEATED IN THE PASSENGER CABIN.
4. ALL SEATS MUST BE FIRE BLOCKED IN ACCORDANCE WITH JAR 25.853 (b) OR EQUIVALENT.
5. ALL PASSENGER AND CREW SEAT BELTS MUST CONFORM TO ETSO-C22g OR EQUIVALENT.
6. ALL SEAT BACKS AND BULKHEADS MUST BE MARKED WITH "FASTEN SEAT BELT WHILE SEATED" PLACARDS.
7. ARMREST IN UPRIGHT POSITION MUST NOT PROJECT BEYOND SEAT BACK IN UPRIGHT POSITION MORE THAN .5", TYPICAL FOR ALL SEATS.
8. PASSAGEWAY TO ALL TYPE I AND TYPE II EXITS MUST NOT BE LESS THAN 20".
9. AIRCRAFT WEIGHT AND BALANCE MUST BE RECALCULATED OR AIRCRAFT WEIGHED AFTER INTERIOR MODIFICATION TO DETERMINE NEW AIRCRAFT WEIGHT AND CG LOCATION. REVISION TO THE AIRCRAFT WEIGHT AND BALANCE RECORD MUST BE MADE TO REFLECT CHANGES.
10. ALL SEAT LOCATING DIMENSIONS ARE CENTERED ON THE SEATS FRONT MOUNTING STUD.
11. SEAT ENVELOPE DATA DEFINED PER ECONOMY CLASS SEAT WEBER 25-26-40 MARCH 18TH 2003.

FWD LH & RH WINDSCREENS (ITEMS 24 & 25) ARE INSTALLED IAW AMES EB A320 WINDSCREEN INSTALLATION EB_M11600108_RSP_17042012.

REMOVAL INSTRUCTIONS:

1. REMOVE AND TAG AS SERVICEABLE FWD LEFT HAND & RIGHT HAND CLOSETS IAW AMM 25-27-44.
2. REMOVE ALL PASSENGER LIFE VESTS FROM EACH PAX LIFE VEST POUCH AND RETAIN FOR REINSTALLATION.
3. REMOVE AND TAG AS SERVICEABLE ALL SEATING ASSEMBLIES IAW AMM 25-21-41, RETAIN ALL SEAT TRACKING CAPPING FOR REINSTALLATION (REFER TO ERT/166-201).

INSTALLATION INSTRUCTIONS:

1. INSTALL NEW PASSENGER SEATING ASSEMBLIES IAW AMM 25-21-41, WITH REFERENCE TO ERT/166-201.
2. INSTALL 1 PASSENGER LIFE VEST PER PAX IN PROVISIONED LOCATIONS ON EACH SEATING ASSEMBLY.
3. INSTALL SEAT TRACK CAPPING AS REQUIRED, WITH REFERENCE TO IPC 25-28-09 & ERT/166-201.
4. CENTRE BLANKING PLATE ON THE ARMREST OF EACH PASSENGER SEAT TO BLANK PCU HOLE.
5. BACK DRILL HOLES IN SEAT ARM REST AS REQUIRED.
6. INSTALL BLANKING PLATE USING SUITABLE 1/8" POP RIVETS (ITEM 26).
7. PAINT RIVETS USING P/N ULN00669 GREY PAINT OR EQUIVALENT

CLOSE UP:

1. PERFORM LOOSE EQUIPMENT CHECK AND RETURN THE AIRCRAFT TO A SERVICEABLE CONDITION.

REVISIONS		
ISSUE	DESCRIPTION	DATE
1	INITIAL ISSUE	17/05/2012
2	REMOVED NOTES ITEM 5 THRU 17 INCLUDED SHEET 3 FOR BLANKING PLATE INSTALLATION UPDATED/INCLUDED INSTALLATION INSTRUCTIONS 4, 5, 6 & 7 FOR BLANKING PLATES, INCLUDED ITEM 26	25/05/2012

QTY	Item No	Part Number	Description	Note
	A/R	26	TLED416BS	1/8" INCH RIVET
	1	25	W32C00-02-01116	AMES FWD RH WINDSCREEN
	1	24	W32C00-01-1116	AMES FWD LH WINDSCREEN
	180	23	ERT/166-512-08	BLANKING PLATE
	AR	21	REFER TO IPC	SEAT TRACK CAPPING
	180	19	P01074-101W	PASSENGER LIFE VESTS
	1	17	119225-016	SEAT AY-MODEL AI 1000I-CAA, T/C STD TPL, NO TABLES, 3" RECL, NO BREAKOVER - IFE
	1	16	119225-013	SEAT AY-MODEL AI 1000I-CAA, T/C STD TPL, W/EPL, NO TABLES, 3" RECL, NO BREAKOVER - IFE
	1	15	119225-012	SEAT AY-MODEL AI 1000I-CAA, T/C STD TPL, W/EPL, NO OUTBD ARM, SPCL OUTBD CUSHION, NO BREAKOVER - IFE
	1	14	119225-011	SEAT AY-MODEL AI 1000I-CAA, T/C STD TPL, W/EPL, NO OUTBD ARM, SPCL OUTBD CUSHION, NO BREAKOVER - IFE
	1	13	119225-010	SEAT AY-MODEL AI 1000I-CAA, T/C STD TPL, DIRECTIONAL LATCH W/ AFT SLIDER, NO RECL, NO OUTBD ARM, SPCL OUTBD CUSHION, NO BREAKOVER - IFE
	1	12	119225-009	SEAT AY-MODEL AI 1000I-CAA, T/C STD TPL, DIRECTIONAL LATCH W/ AFT SLIDER, NO RECL, NO OUTBD ARM, SPCL OUTBD CUSHION, NO BREAKOVER - IFE
	1	11	119225-008	SEAT AY-MODEL AI 1000I-CAA, T/C STD TPL, W/EPL, DIRECTIONAL LATCH W/ AFT SLIDER, NO RECL, NO BREAKOVER - IFE
	1	10	119225-007	SEAT AY-MODEL AI 1000I-CAA, T/C STD TPL, W/EPL, DIRECTIONAL LATCH W/ AFT SLIDER, NO RECL, NO BREAKOVER - IFE
	9	9	119225-003	SEAT AY-MODEL AI 1000I-CAA, T/C STD TPL, WITH EPL, NO BREAKOVER - IFE
	25	8	119225-006	SEAT AY-MODEL AI 1000I-CAA, T/C STD TPL, NO BREAKOVER - IFE
	16	7	119225-001	SEAT AY-MODEL AI 1000I-CAA, T/C STD TPL, NO BREAKOVER - IFE
	1	6	119224-004	SEAT AY-MODEL AI1000I-CAA, T/C IAT TPL, NO BREAKOVER - IFE
	1	5	119224-001	SEAT AY-MODEL AI1000I-CAA, T/C IAT TPL, WITH EPL, NO BREAKOVER - IFE
	4			
	3			
	2			
		1	ERT/166-201-01	SEAT INSTALLATION - MSN 1938 LIVINGSTON

2	1	Issue	Released	
	BOD	Drawn	Checked	
	MM	Electrical & Avionics	Checked	
	MM	Cabin Safety	Checked	
	KMcK	Structures	Checked	
	KMcK	Office of Airworthiness	Checked	

SEAT INSTALLATION

Aircraft Type: A320 For assembly on: Scale: N/A

DRG No. ERT/ 166-201

1 of 3

A
DRG No ERT/ 166-201

B

C

D

E

F

TITLE: ERT/166-201 ISSUE: 2

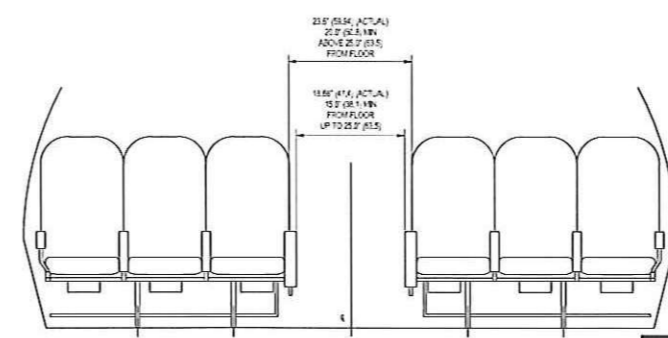
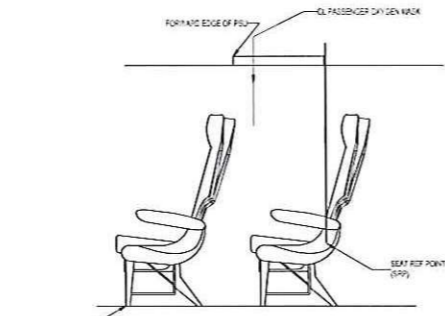
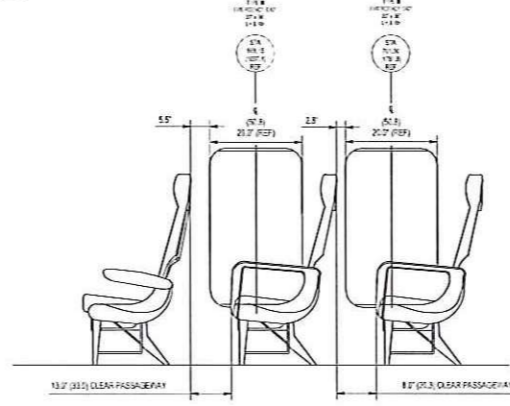
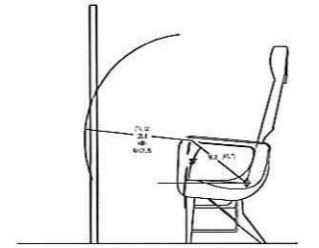
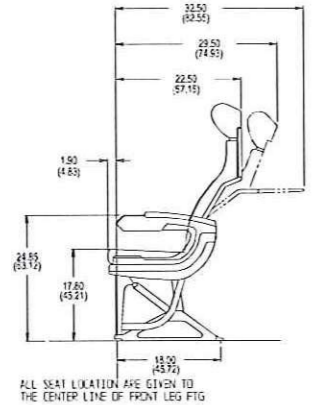
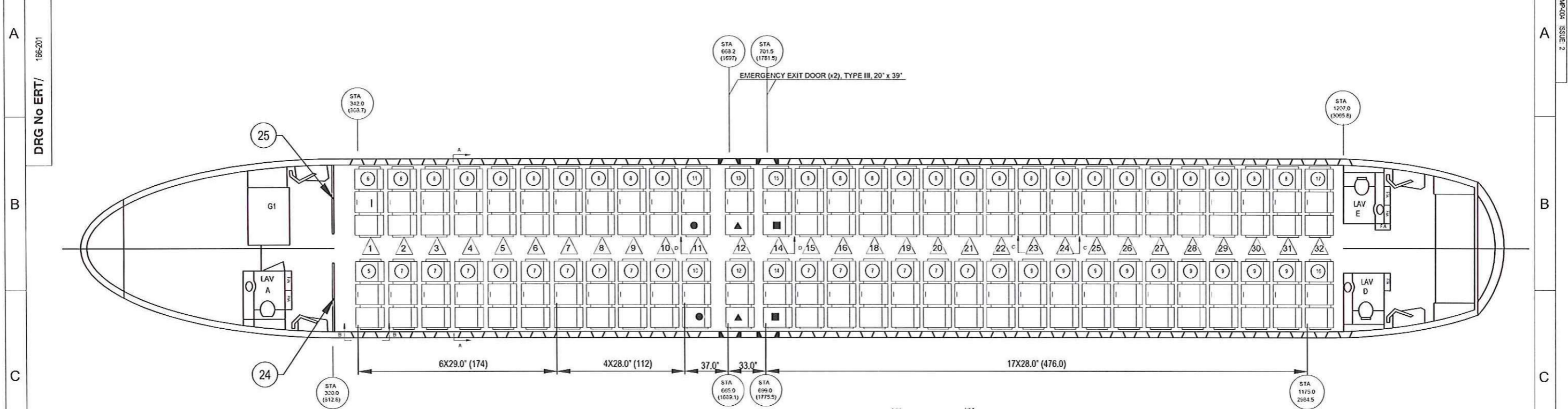
B

C

D

E

F



LEGEND

- = NO RECLINE
- ▲ = NO RECLINE, NO BREAKOVER
- = NO BREAKOVER
- △ = SEAT ROW NUMBER
- (XXX.X) = DIMENSION IN CENTIMETRES
- F/A = FLIGHT ATTENDANT SEAT

2	1	Issue
BOD	MM	Drawn
MM	MM	Checked
MM	MM	Electrical & Avionics
KMcK	MM	Cabin Safety
KMcK	MM	Structures
KMcK	MM	Offing of Aircraft

Eirtech Aviation Services
 The World's Leading Aviation Services Specialist

SEAT INSTALLATION

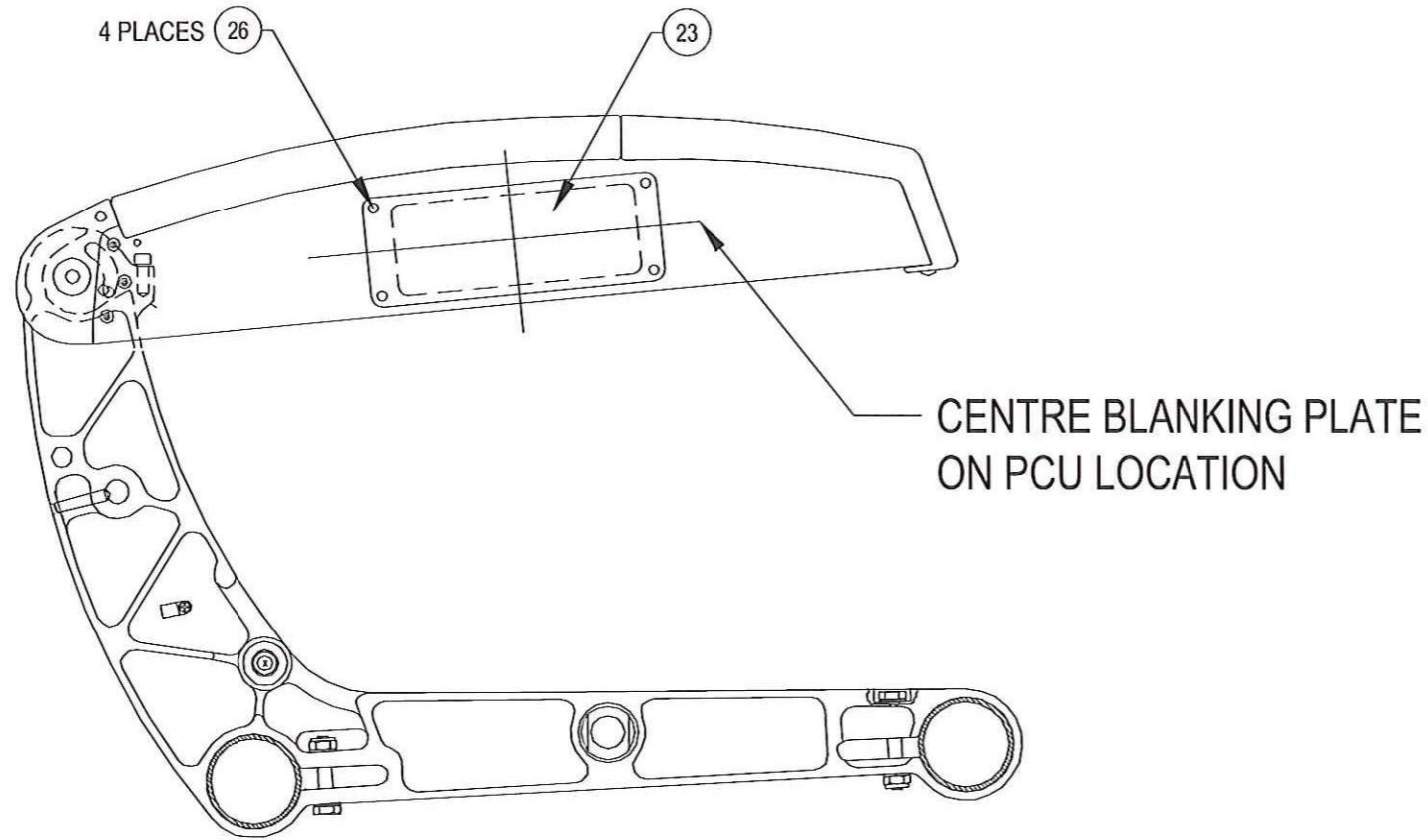
Arch Type: A320
 First Installed on: -
 Scale: N/A

DRG No. ERT/ 166-201


REV 2 OF 3

THIRD ANGLE PROJECTION  DO NOT SCALE ALL DIMENSIONS IN INCHES UNLESS OTHERWISE STATED

DRG No ERT/ 166-201



PCU BLANKING PLATE INSTALLATION
INSTALLATION SIMILAR FOR EACH ARMREST ON EACH TRIPLE SEAT
ASSEMBLY

2	1	Issue	Fabrication		© EIRTECH AVIATION SERVICES ALL RIGHTS RESERVED THIS DOCUMENT IS THE PROPERTY OF EIRTECH AVIATION SERVICES IT IS TO BE USED ONLY FOR THE PURPOSES SPECIFIED IN THE DRAWING ANY REPRODUCTION OR TRANSMISSION OF THIS DOCUMENT WITHOUT THE WRITTEN PERMISSION OF EIRTECH AVIATION SERVICES IS STRICTLY PROHIBITED.	 The World's Leading Aircraft Services Specialist	
<i>KS</i>	BOD	Drawn	Sheetwork ± 0.5mm				
<i>MS</i>	MM	Checked	Machining ± 0.1mm				
<i>EM</i>	MM	Electrical & Avionics	Agree ± 0.5°				
<i>MM</i>	KMcK	Cabin Safety	Unless otherwise stated	Title		SEAT INSTALLATION	
<i>MM</i>	KMcK	Structures	Aircraft Type		Pre-assembled on	Scale	
<i>MM</i>	KMcK	Office of Aircraft-Innass	A350	-	N/A	DRG No. ERT/ 166-201	
						sw 3	or 3