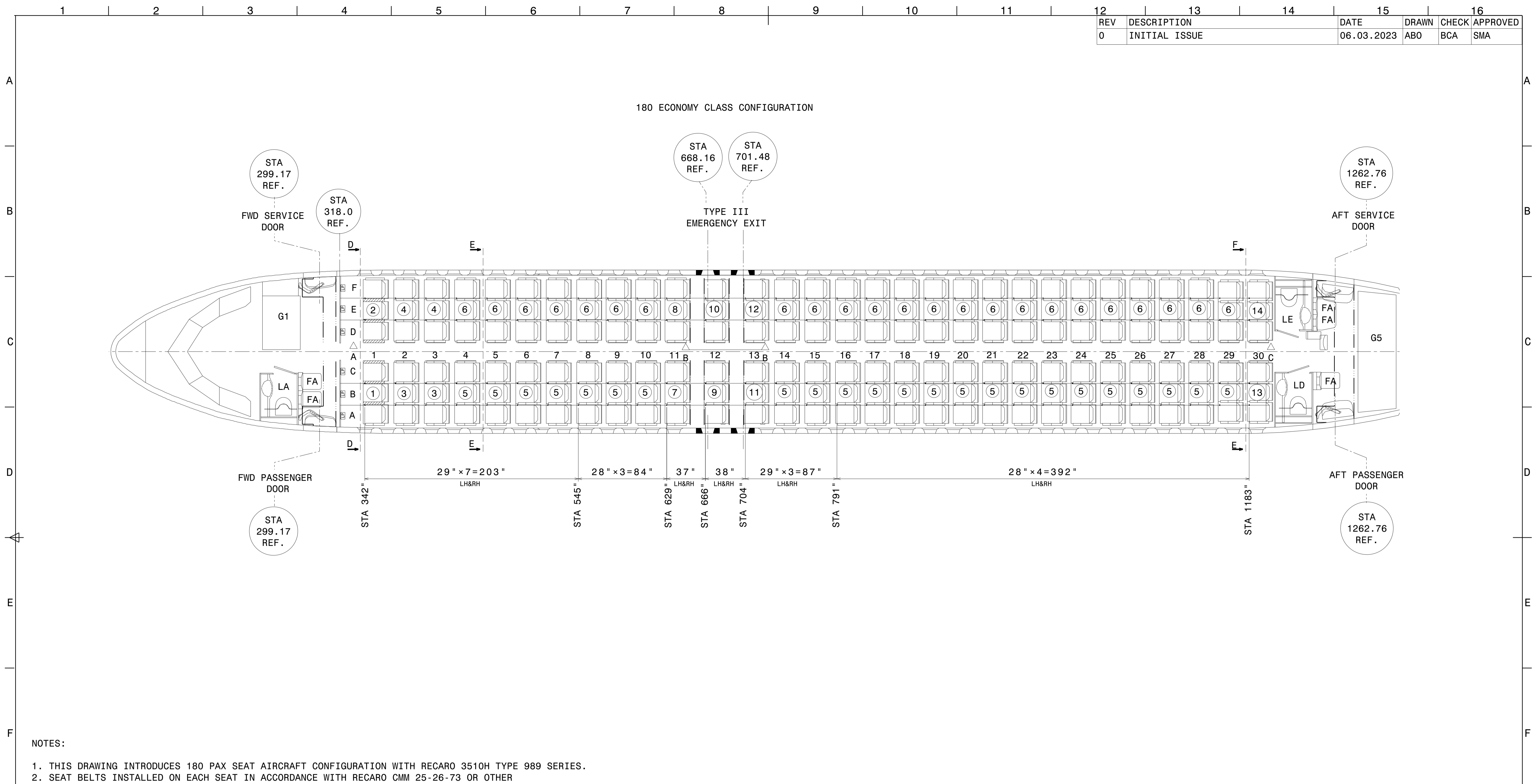


REV	DESCRIPTION	DATE	DRAWN	CHECK	APPROVED
0	INITIAL ISSUE	06.03.2023	ABO	BCA	SMA



- NOTES:
1. THIS DRAWING INTRODUCES 180 PAX SEAT AIRCRAFT CONFIGURATION WITH RECARO 3510H TYPE 989 SERIES.
 2. SEAT BELTS INSTALLED ON EACH SEAT IN ACCORDANCE WITH RECARO CMM 25-26-73 OR OTHER APPROVED SEAT BELT TSO C-22()
 3. SEAT POSITIONS ARE TO THE CENTERLINE OF THE FRONT FOOT STUD OF THE SEAT.
 4. SEATS MUST BE INSTALLED ONLY IN THE PASSENGER CABIN AS FORWARD FACING SEATS ON A320 SEAT TRACKS P/NS D021-70372-20X-01 (WHERE X MUST BE EITHER 0, 2, 4, OR 6, AS PER AIRBUS SPECIFICATION 2521 M1F 1000 00).
 5. ALL SEATS MUST BE (E)TSO C-39(b) OR (E)TSO C127 APPROVED
 6. SEATS ON THE FORWARD FACE OF THE TYPE III ACCESS ROUTE ARE TO HAVE THE SEATBACK TABLE STOWAGE LATCH RESTRICTED SO THAT IT CAN ONLY BE OPENED BY TURNING IT INBOARD
 7. RELOCATE/INSTALL/REMOVE PSU'S I.A.W. AMM. THE CABIN IS TO BE FITTED WITH AT LEAST 10% MORE OXYGEN OUTLETS THAN THE NUMBER OF SEATS (INCLUDING CREW SEATS), THE EXTRA OUTLETS ARE TO BE EVENLY DISTRIBUTED THROUGHT THE MAIN CABIN
 8. ENSURE THE DEPLOYED OXYGEN MASK DOES NOT FALL FORWARD OF THE SEAT BACK OF THE SEAT IN FRONT WHEN IS THE FULLY RECLINED POSITION
 9. REFERENCE TO EASA MINOR CHANGE APPROVAL NO.: MICA AER0024001_REVO
 10. THIS DRAWING IS TO BE USED IN CONJUNCTION WITH AERONAVA SERVICE BULLETIN: SB_01_AER024001_REVO
 11. THE OPERATOR/PART 145 ORGANISATION IS RESPONSIBLE FOR ENSURING THE INSTALLATION OF AN ADEQUATE (E)TSO APPROVED LIFE VEST UNDER EACH SEAT, IN THE LIFE VEST POUCH
 12. FWD MONUMENT WALL AND ALL PASSENGERS SEAT BACKRESTS MUST HAVE PLACARDS: "LIFE VEST UNDER YOUR SEAT" AND "FASTEN SEAT BELT WHILE SEATED" AS DEFINED IN RECARO CMM 25-26-73 OR OTHER EASA APPROVED CHANGES

SEAT CHARACTERISTICS AND LEGEND

IN-ARMREST TABLE
 ATTENDANT SEAT
 LITERATURE POCKET
 EMERGENCY EGRESS PATH

ITEM	P/N	DESCRIPTION	QTY	MANUFACTURER
14	3510H989-32-051	RH LAST ROW, NARROW, NO BACKTABLE, NO LIT. POCKET	1	RECARO
13	3510H989-31-051	LH LAST ROW, NARROW, NO BACKTABLE, NO LIT. POCKET	1	RECARO
12	3510H989-32-042	RH EXIT, NO ARMREST OUTBOARD, SPEC. SEAT BELT SHACKLE	1	RECARO
11	3510H989-31-042	LH EXIT, NO ARMREST OUTBOARD, SPEC. SEAT BELT SHACKLE	1	RECARO
10	3510H989-32-032	RH EXIT, NO ARMREST OUTBOARD, SPEC. SEAT BELT SHACKLE	1	RECARO
9	3510H989-31-032	LH EXIT, NO ARMREST OUTBOARD, SPEC. SEAT BELT SHACKLE	1	RECARO
8	3510H989-32-021	RH E/C TPL STD	1	RECARO
7	3510H989-31-021	LH E/C TPL STD	1	RECARO
6	3510H989-32-011	RH E/C TPL STD	23	RECARO
5	3510H989-31-011	LH E/C TPL STD	23	RECARO
4	3510H989-32-082	RH E/C TPL STD	2	RECARO
3	3510H989-31-082	LH E/C TPL STD	2	RECARO
2	3510H989-32-212	RH E/C TPL IAT	1	RECARO
1	3510H989-31-212	LH E/C TPL IAT	1	RECARO

AERONAVA
 Curtea de Arges, ROMANIA
 web: www.aeronava.com
 email: office@aeronava.com

SC Aeronava Services SRL owns the copyright of this drawing, which is supplied with the express condition that is not reproduced, nor used for any other purposes that it was supplied.

DRAWING NO.: **AER024L001**

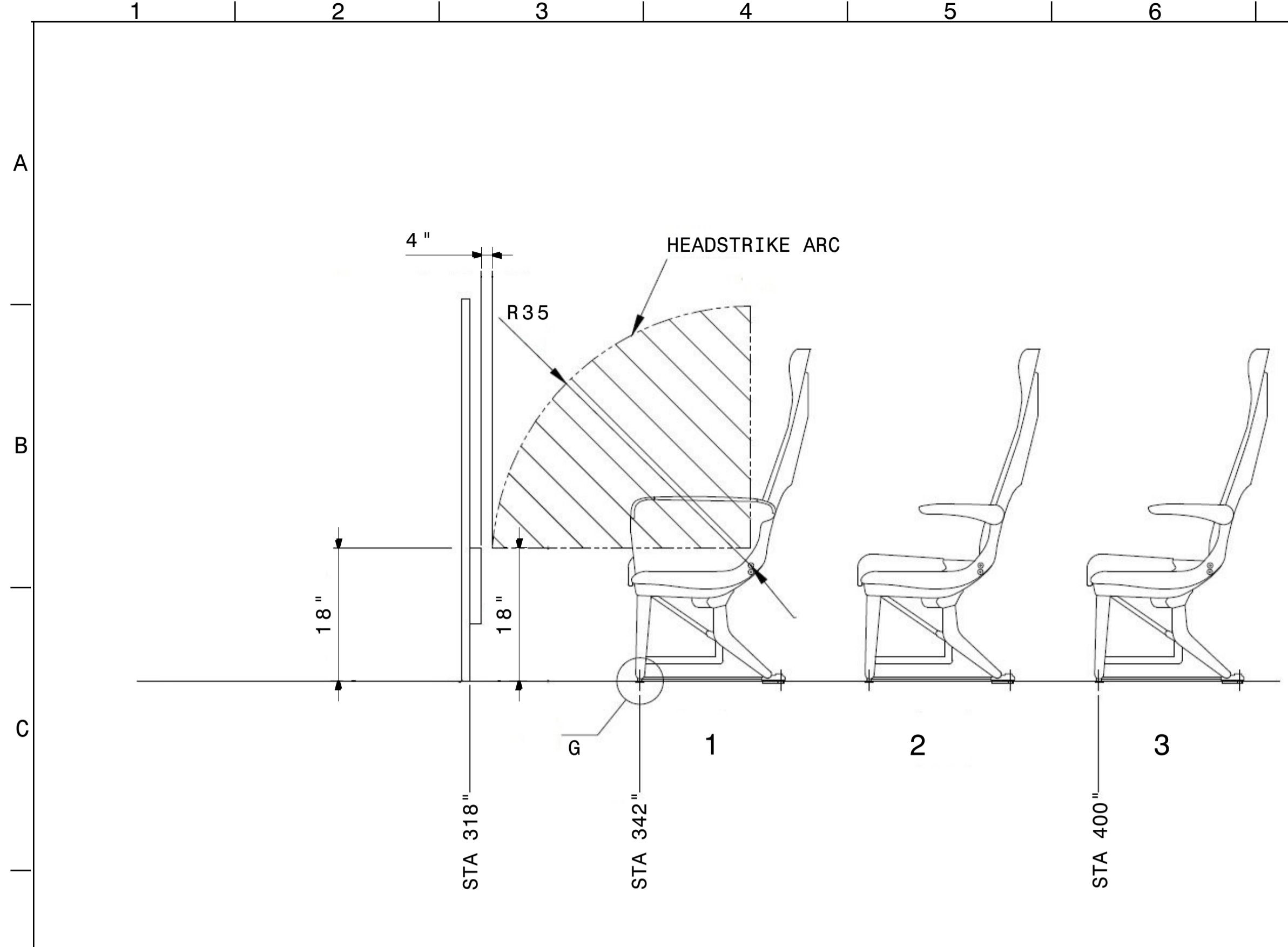
DESCRIPTION: LOPA AeroAid Limited A320-200 180 PAX CONFIG MSN 3734

SCALE: **DO NOT SCALE**

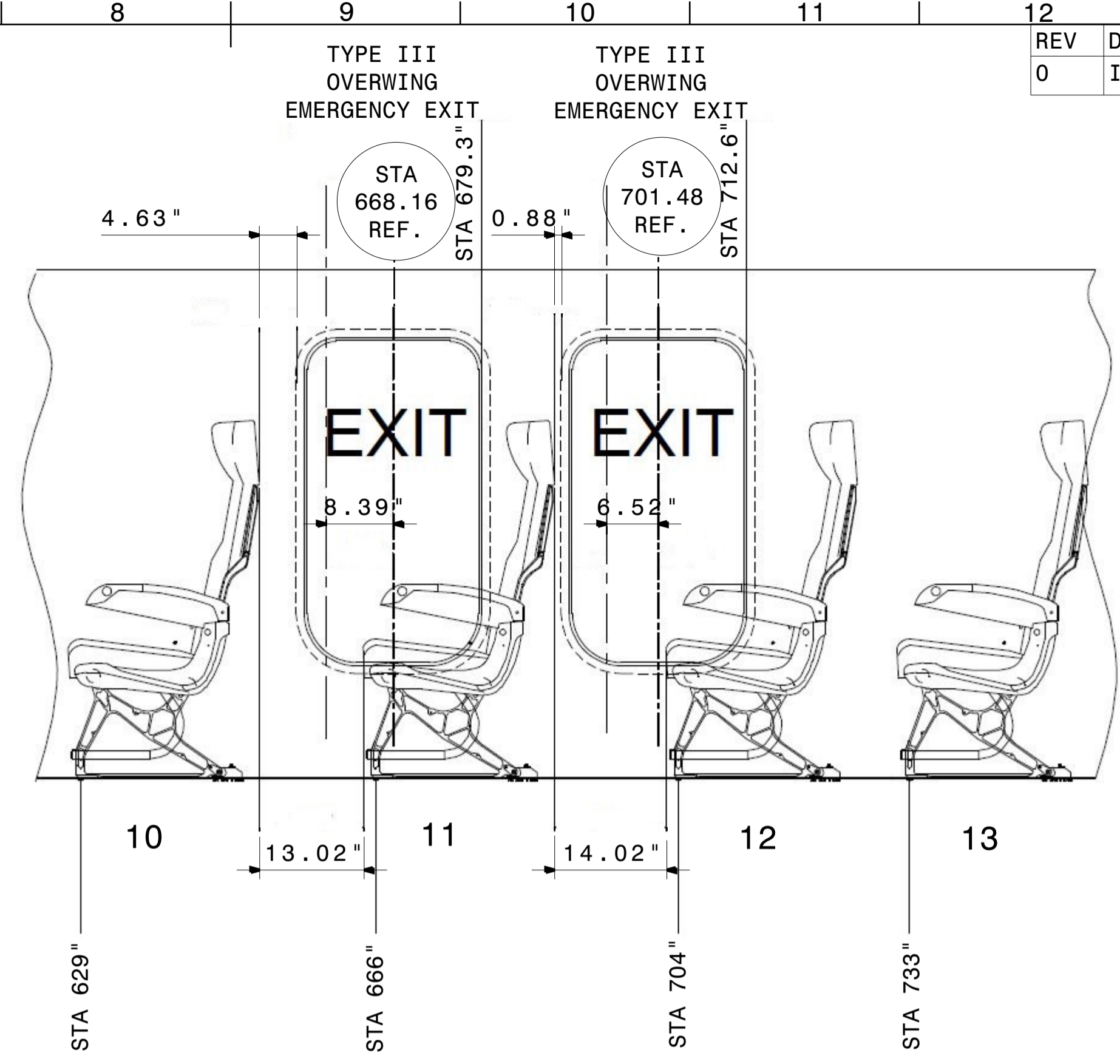
PURPOSE: **LAYOUT**

DIM IN MM SHEET: 01 OF 03 SIZE: A1 REV: 0

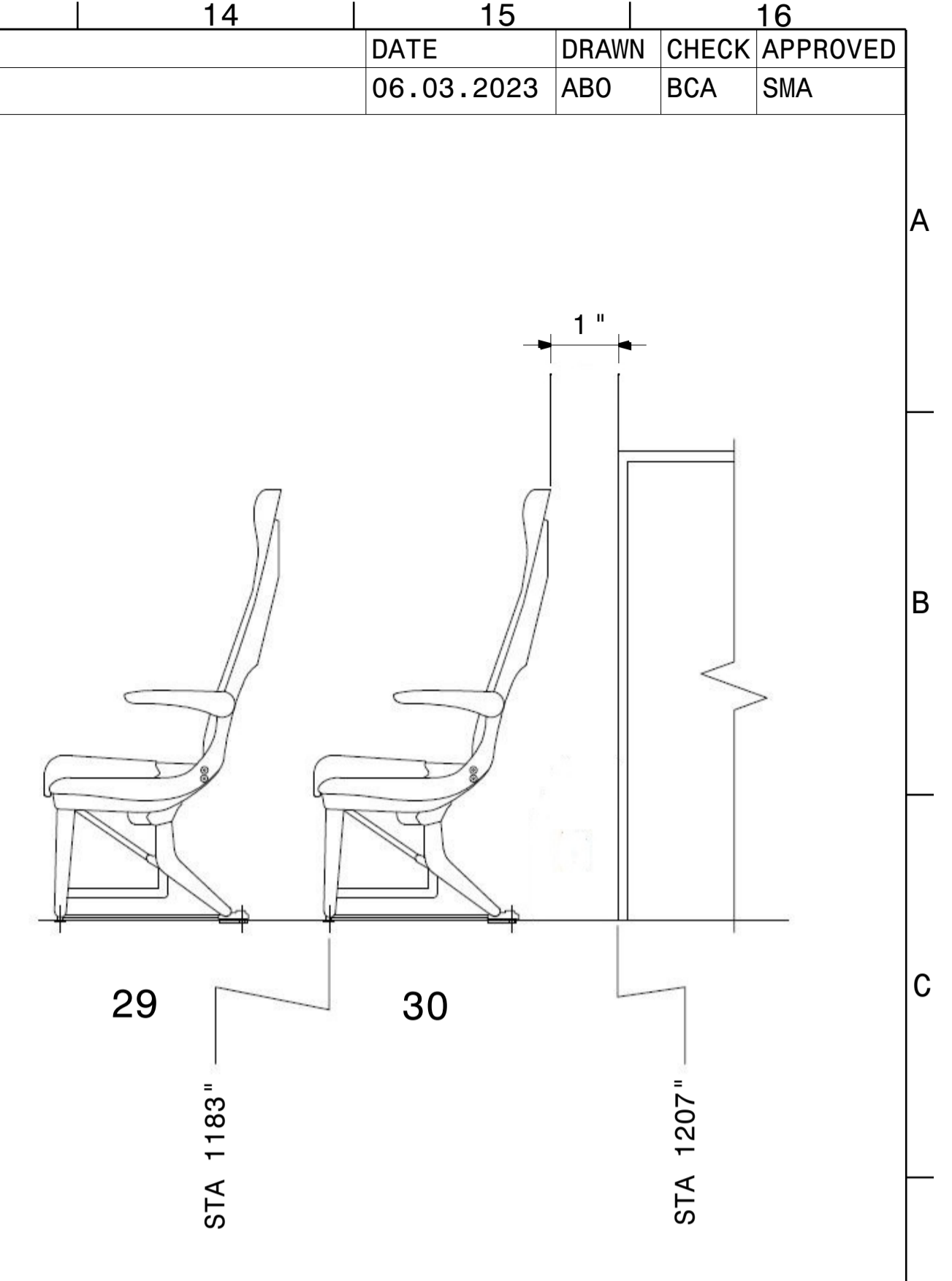
REV	DESCRIPTION	DATE	DRAWN	CHECK	APPROVED
0	INITIAL ISSUE	06.03.2023	ABO	BCA	SMA



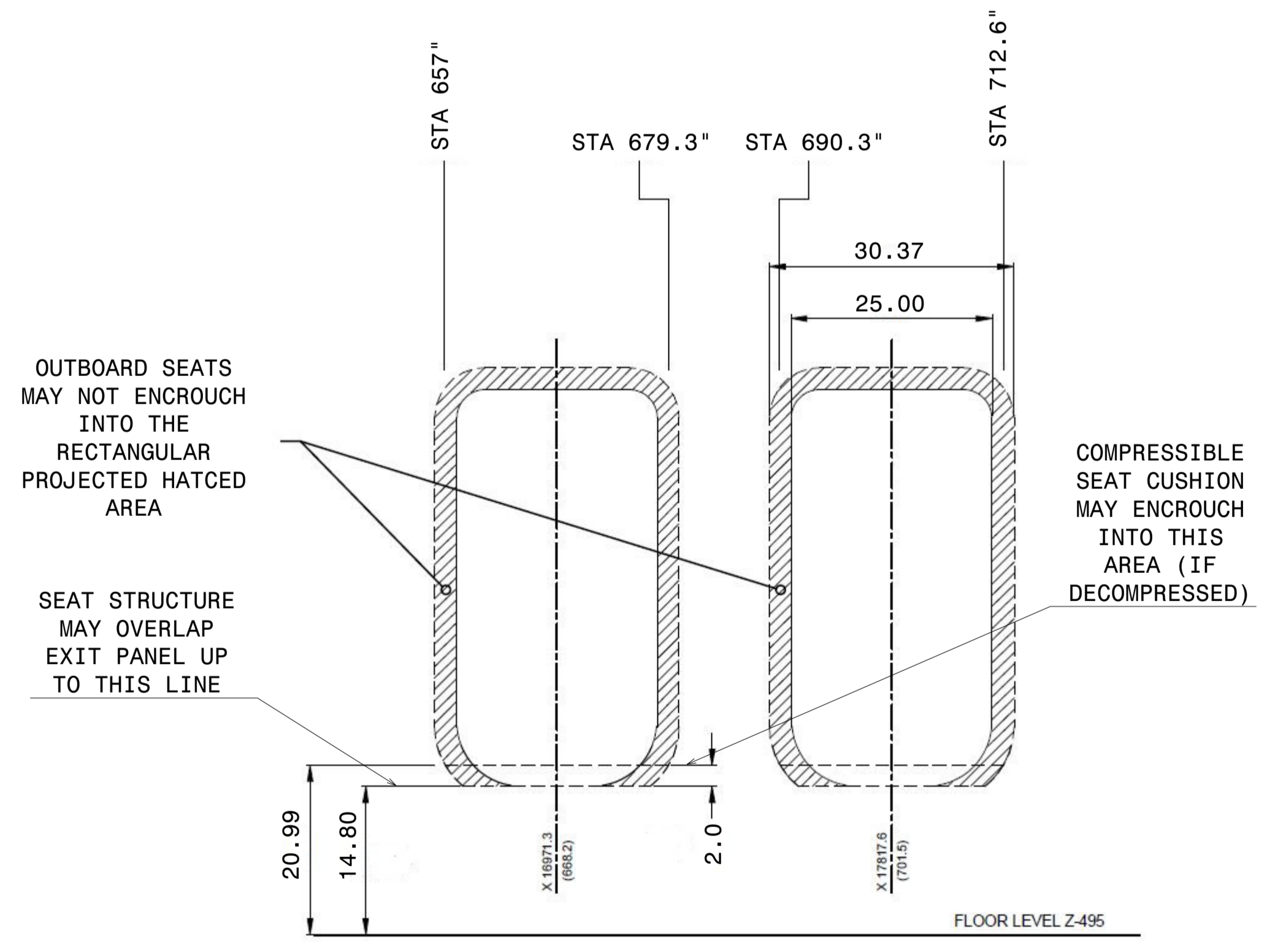
VIEW ON ARROW A
HEADSTRIKE ARC CLEARANCE ENVELOPE



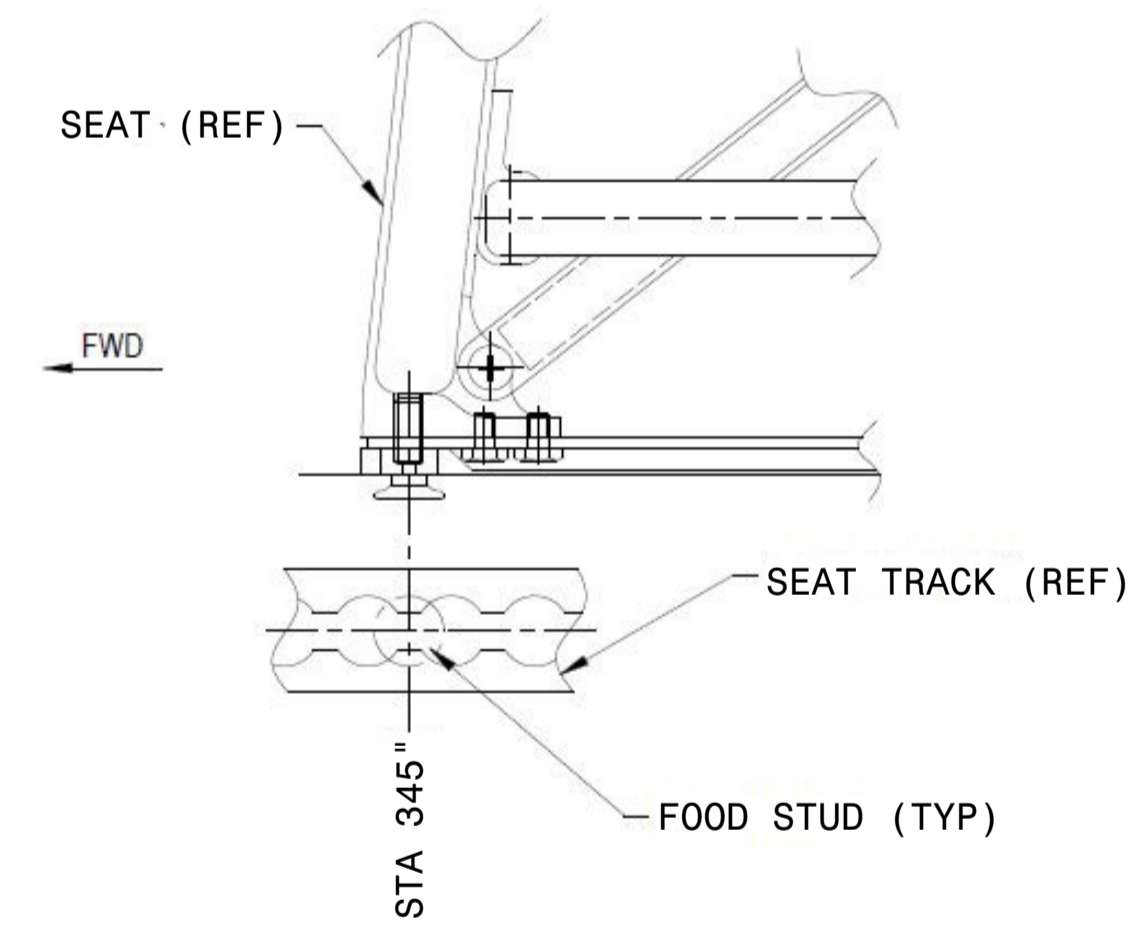
VIEW ON ARROW B
TYPE III EMERGENCY EGRESS CLEARANCE ENVELOPE



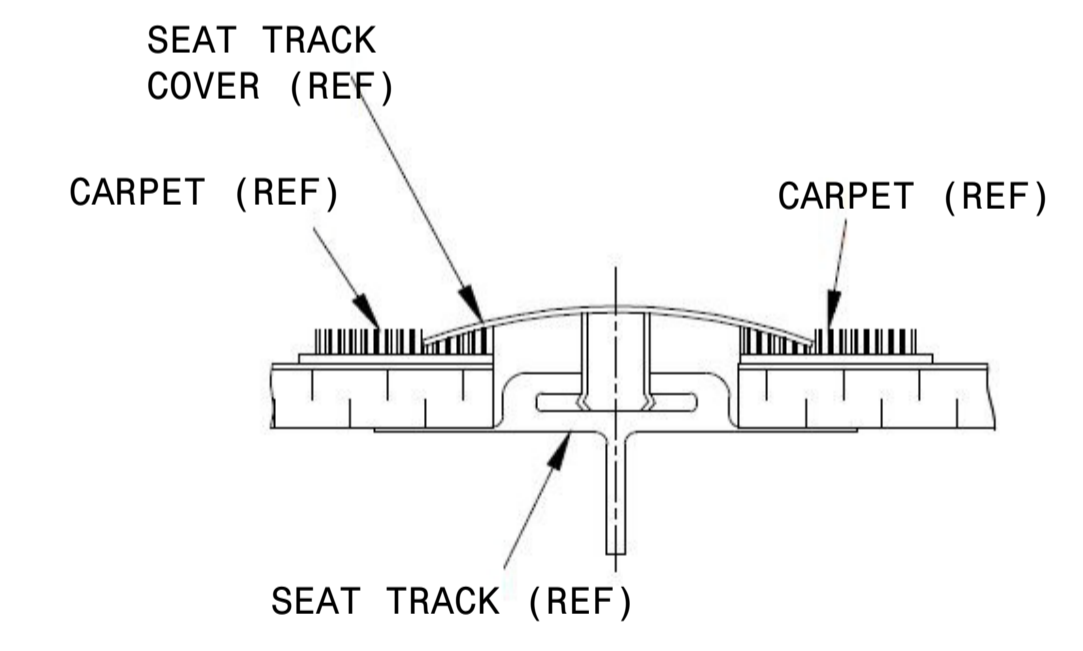
VIEW ON ARROW C
SEAT BACK CLEARANCE ENVELOPE



VIEW ON ARROW B
TYPE III EXIT SEAT CLEARANCE ENVELOPE



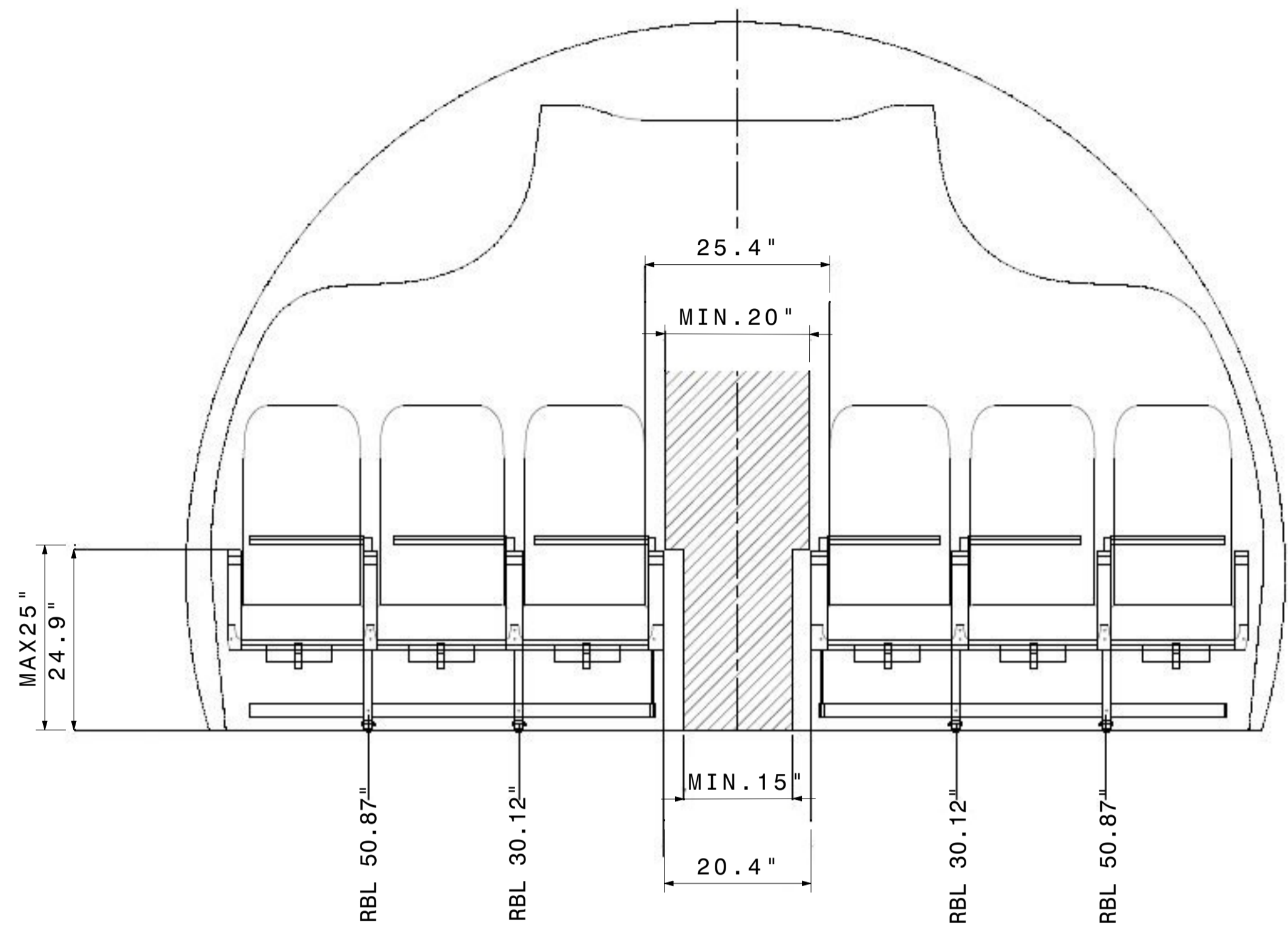
DETAIL G
TYP. SEAT FRONT STUD ATTACHMENT



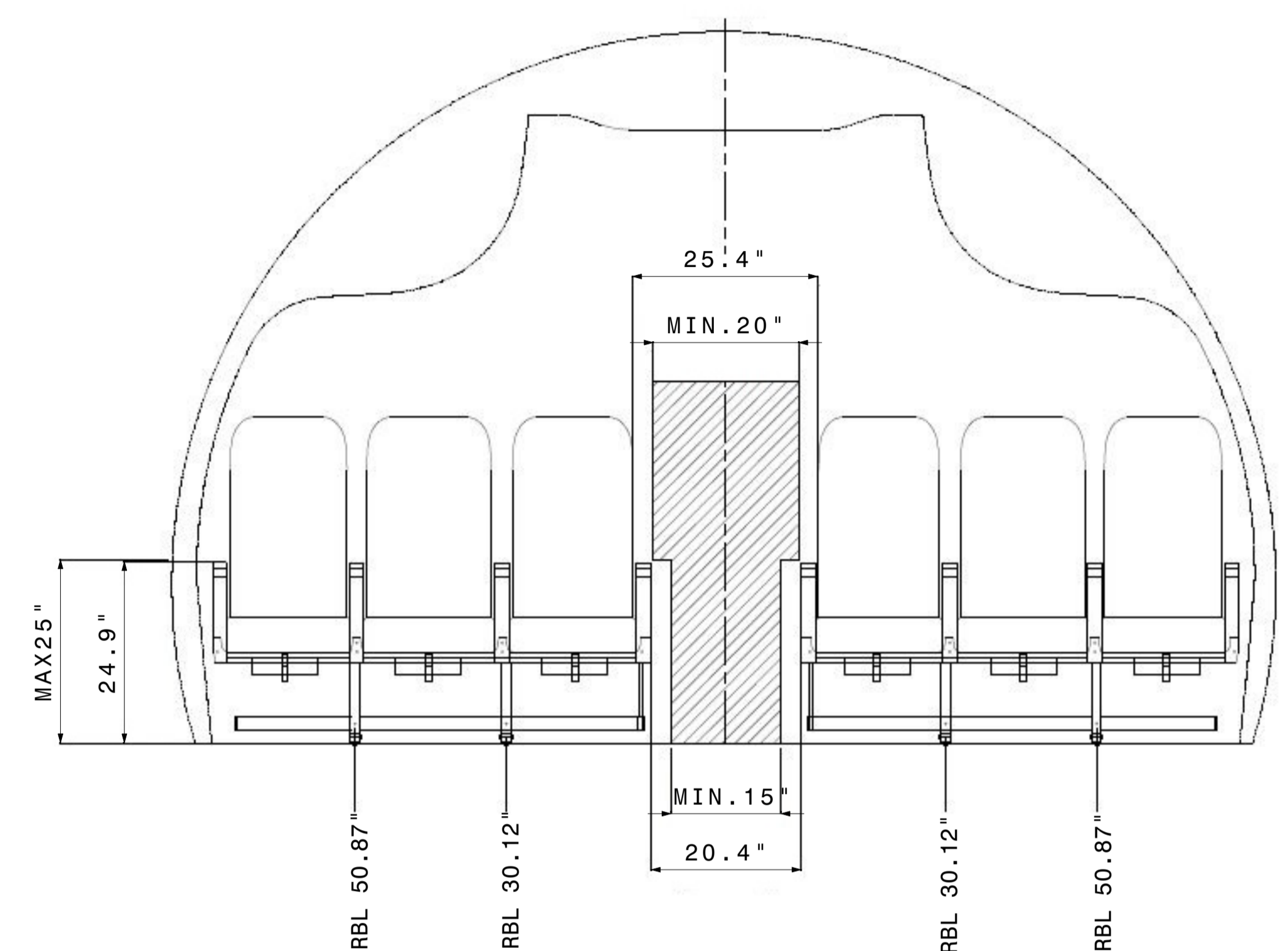
TYPICAL SEAT TRACK COVER DETAIL

AERONAVA Curtea de Arges, ROMANIA web: www.aeronava.com email: office@aeronava.com	SC Aeronava Services SRL owns the copyright of this drawing, which is supplied with the express condition that is not reproduced, nor used for any other purposes that it was supplied.	DRAWING NO.: AER024L001
	DESCRIPTION: LOPA AeroAid Limited A320-200 180 PAX CONFIG MSN 3734	DIM IN MM SHEET: 02 OF 03 SIZE: A1 REV: 0
SCALE: DO NOT SCALE	PURPOSE: LAYOUT	841 x 594

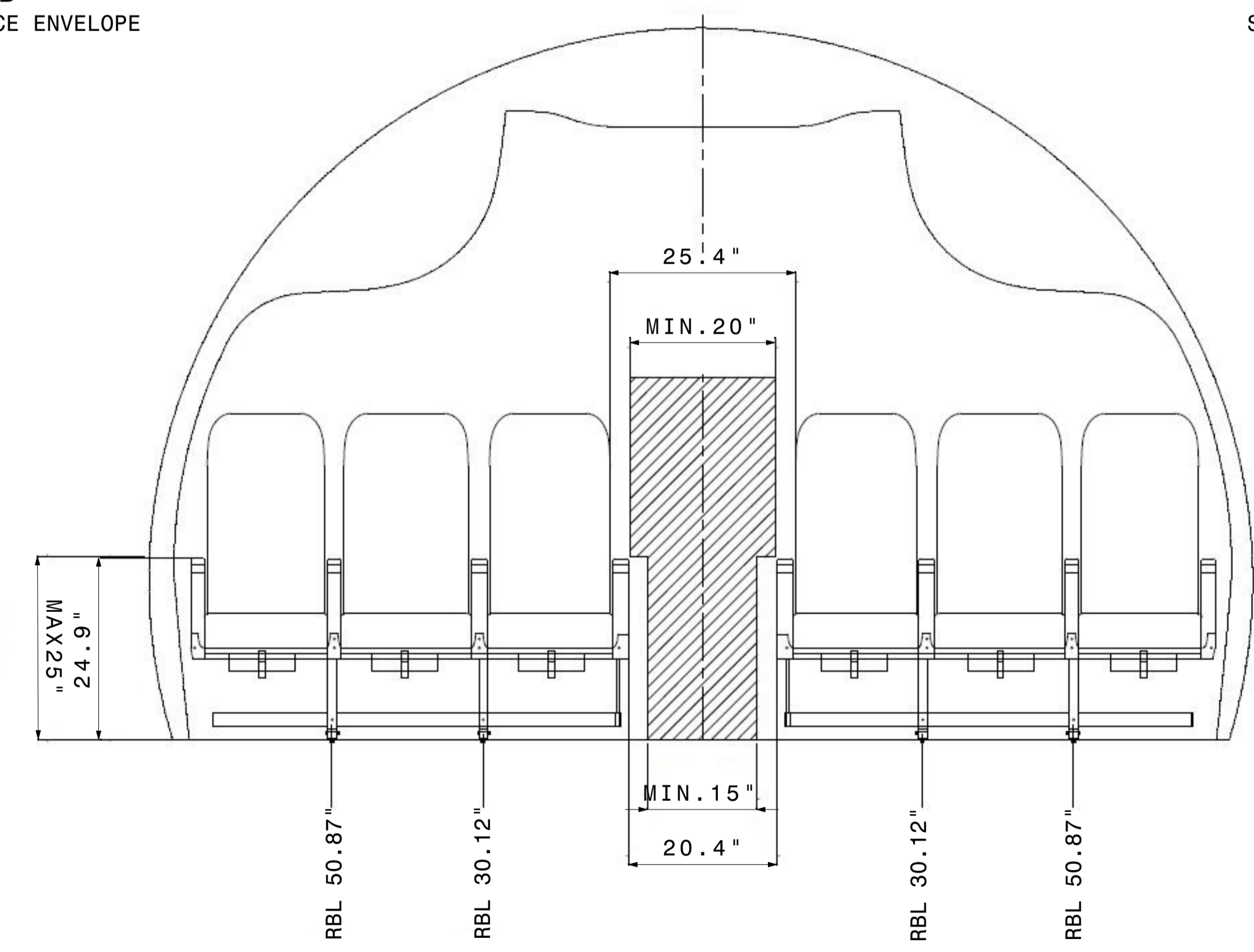
REV	DESCRIPTION	DATE	DRAWN	CHECK	APPROVED
0	INITIAL ISSUE	06.03.2023	ABO	BCA	SMA



SECTION D-D
IAT SEATS AISLE CLEARANCE ENVELOPE



SECTION E-E
STD SEATS AISLE CLEARANCE ENVELOPE



SECTION F-F
LAST ROW SEATS AISLE CLEARANCE ENVELOPE

AERONAVA <small>Curtea de Arges, ROMANIA web: www.aeronava.com email: office@aeronava.com</small>	<small>SC Aeronava Services SRL owns the copyright of this drawing, which is supplied with the express condition that is not reproduced, nor used for any other purposes that it was supplied.</small>	<small>DRAWING NO.:</small> AER024L001
	<small>DESCRIPTION:</small> LOPA AeroAid Limited A320-200 180 PAX CONFIG MSN 3734	<small>DIM IN MM</small> <small>SHEET: 03 OF 03</small> <small>SIZE: A1</small> <small>REV: 0</small>
<small>SCALE: DO NOT SCALE</small>	<small>PURPOSE: LAYOUT</small>	