



THIRD ANGLE PROJECTION  DO NOT SCALE ALL DIMENSIONS IN MM UNLESS OTHERWISE STATED

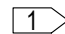
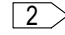
REVISIONS		
ISSUE	DESCRIPTION	DATE
1	INITIAL ISSUE	

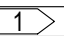
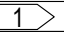
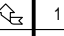
DRG No ERT/ 1521-207


NOTES:

1. THIS DRAWING IS TO BE READ IN CONJUNCTION WITH SERVICE BULLETIN ERT-SB-2844.
2. ALL SEAT LOCATING DIMENSIONS ARE CENTERED ON THE SEATS FRONT MOUNTING STUD.
3. SEAT PITCHES AND STATION POINT REFERENCES ARE APPLICABLE TO BOTH LEFT HAND AND RIGHT HAND UNLESS OTHERWISE STATED.
4. REFER TO B/E AEROSPACE CMM 25-22-57 AS REQUIRED FOR SEAT INSTALLATION.
5. ENSURE AISLE WIDTHS ARE COMPLIANT WITH JAR 25.815.
6. INSTALL SEAT TRACK CAPPING, TO ALL EXPOSED SEAT TRACK AS REQUIRED TO SUIT NEW LAYOUT.
7. ENSURE A 'FASTEN SEAT BELT WHILE SEATED' AND 'LIFE VEST UNDER YOUR SEAT' PLACARD IS VISIBLE TO ALL SEATED OCCUPANTS.
8. FWD RH WINDSCREEN INSTALLED VIA AMES ENGINEERING ORDER EO_M170001046_JTU_01022022 (MOD REFERENCE: MICA_M170001046_JTU_01022022; DOA REFERENCE: EASA.21J.299)

FLAG NOTES :

-  FRONT ROW SEATS ARE COMPLIANT WITH JAR 25, CHANGE 11 (REF. 25.785). THERE ARE NO SUBSTANTIAL HORIZONTAL MEMBERS OCCURRING WITHIN THE AREAS OF ARC OVERLAP ON THE GALLEY INCLUSIVE OF THE LITERATURE POCKETS.
-  SEAT ROW LOCATION BETWEEN OVER-WING EMERGENCY EXITS AS PER OEM DEFINITION (REF. B/E AEROSPACE CMM 25-22-57).

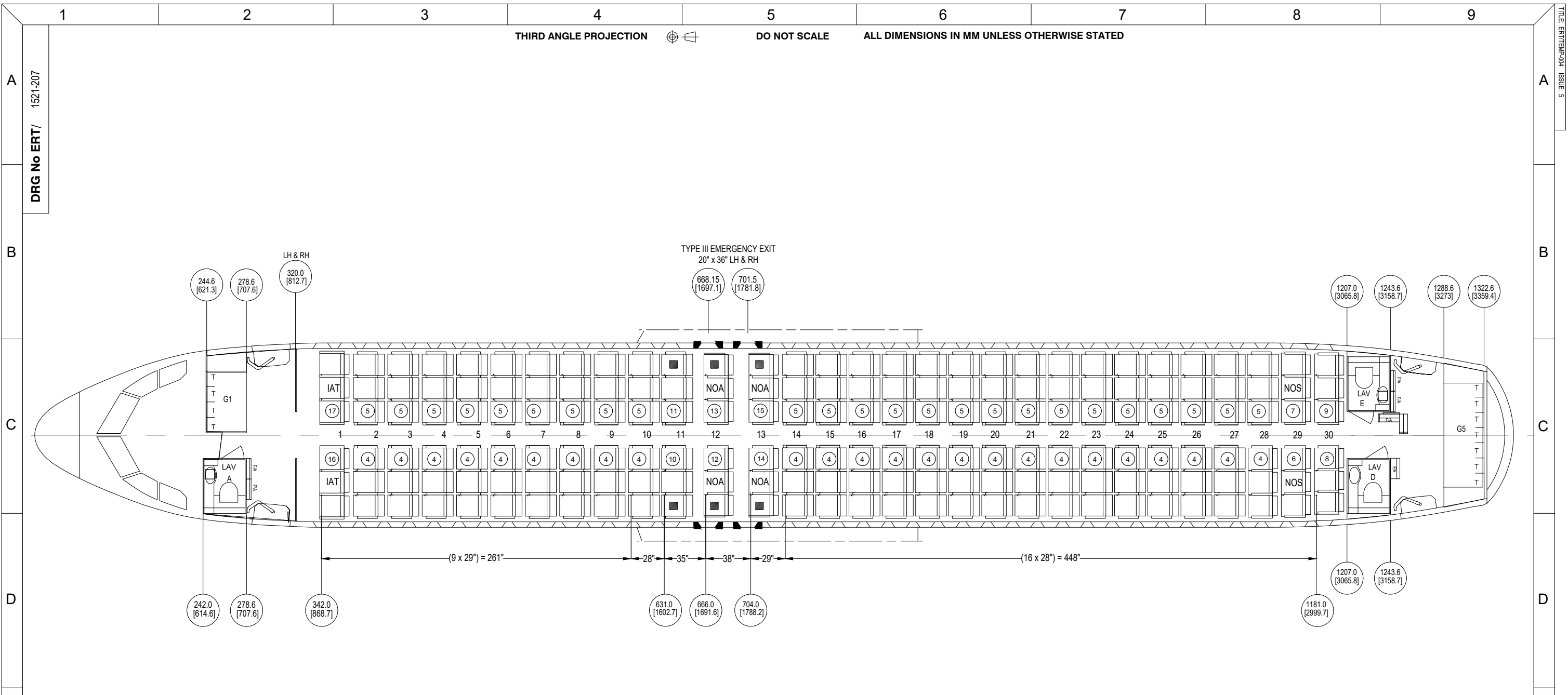
AR	18	ABS0317AB29-23	SEAT-TRACK CAPPING	
1	17	1017030-102	SEAT ASSEMBLY, RH FRONT ROW TPL, IN-ARM FOOD TRAY, Y-BELTS	
1	16	1017030-101	SEAT ASSEMBLY, LH FRONT ROW TPL, IN-ARM FOODTRAY, Y-BELTS	
1	15	1017030-012	SEAT ASSEMBLY, RH STD TPL, NO OUTBD ARM	
1	14	1017030-011	SEAT ASSEMBLY, LH STD TPL, NO OUTBD ARM	
1	13	1017030-010	SEAT ASSEMBLY, RH STD TPL, NO RECLINE, ONE-WAY LATCH, NO OUTBD ARM, 6.0° BACK-MOUNTED FOOD TRAY	
1	12	1017030-009	SEAT ASSEMBLY, LH STD TPL, NO RECLINE, ONE-WAY LATCH, NO OUTBD ARM, 6.0° BACK-MOUNTED FOOD TRAY	
1	11	1017030-008	SEAT ASSEMBLY, RH STD TPL, NO RECLINE, ONE-WAY LATCH, 6.0° BACK-MOUNTED FOOD TRAY	
1	10	1017030-007	SEAT ASSEMBLY, LH STD TPL, NO RECLINE, ONE-WAY LATCH, 6.0° BACK-MOUNTED FOOD TRAY	
1	9	1017030-006	SEAT ASSEMBLY, RH TPL, NRW, LAST ROW, 2.0° RECLINE	
1	8	1017030-005	SEAT ASSEMBLY, LH TPL, NRW, LAST ROW, 2.0° RECLINE	
1	7	1017030-004	SEAT ASSEMBLY, RH TPL, NRW OUTBD PAX	
1	6	1017030-003	SEAT ASSEMBLY, LH TPL, NRW OUTBD PAX	
24	5	1017030-002	SEAT ASSEMBLY, RH STD, TPL	
24	4	1017030-001	SEAT ASSEMBLY, LH STD, TPL	
	3			
	2			
	1	ERT/1521-207-01	180Y PAX LOPA INSTL - A320	
-01	Item No	Part Number	Description	Note

1	Issue	<small>THE TECHNICAL CONTENT OF THIS DRAWING IS APPROVED AND THE ACCURACY IS THE RESPONSIBILITY OF THE USER.</small> 
	Drawn	
	Checked	
	Electrical & Avionics	
	Cabin Safety	
	Structures	Compliance Verified
	Office of Airworthiness	
Title		180Y PAX LOPA INSTL - A320
Aircraft Type	Drawing Issue No.	Scale
A320	1	NTS
DRG No.ERT/ 1521-207		She: 1 or 3

TITLE: ERT/EM-004 ISSUE: 5

THIRD ANGLE PROJECTION DO NOT SCALE ALL DIMENSIONS IN MM UNLESS OTHERWISE STATED

DRG No ERT/ 1521-207



INSTL-01
180Y PAX LOPA - A320

SEAT LOCATIONS APPLICABLE TO BOTH LHS AND RHS OF CABIN

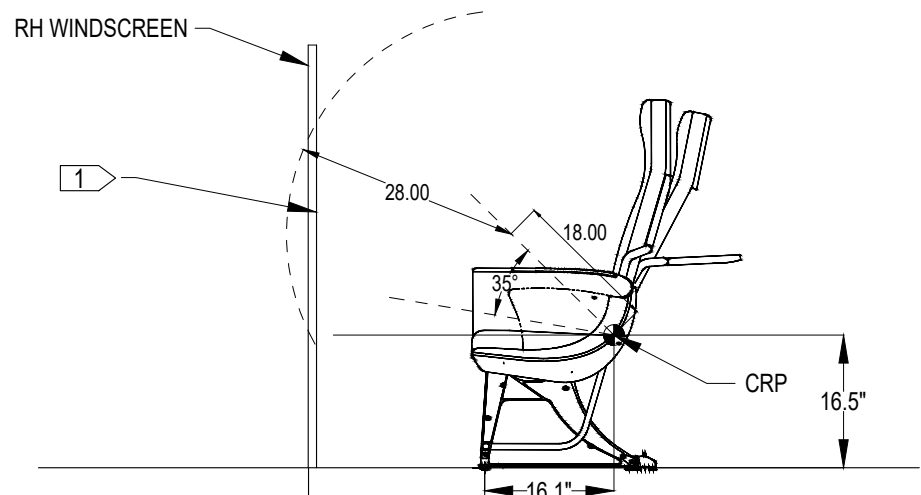
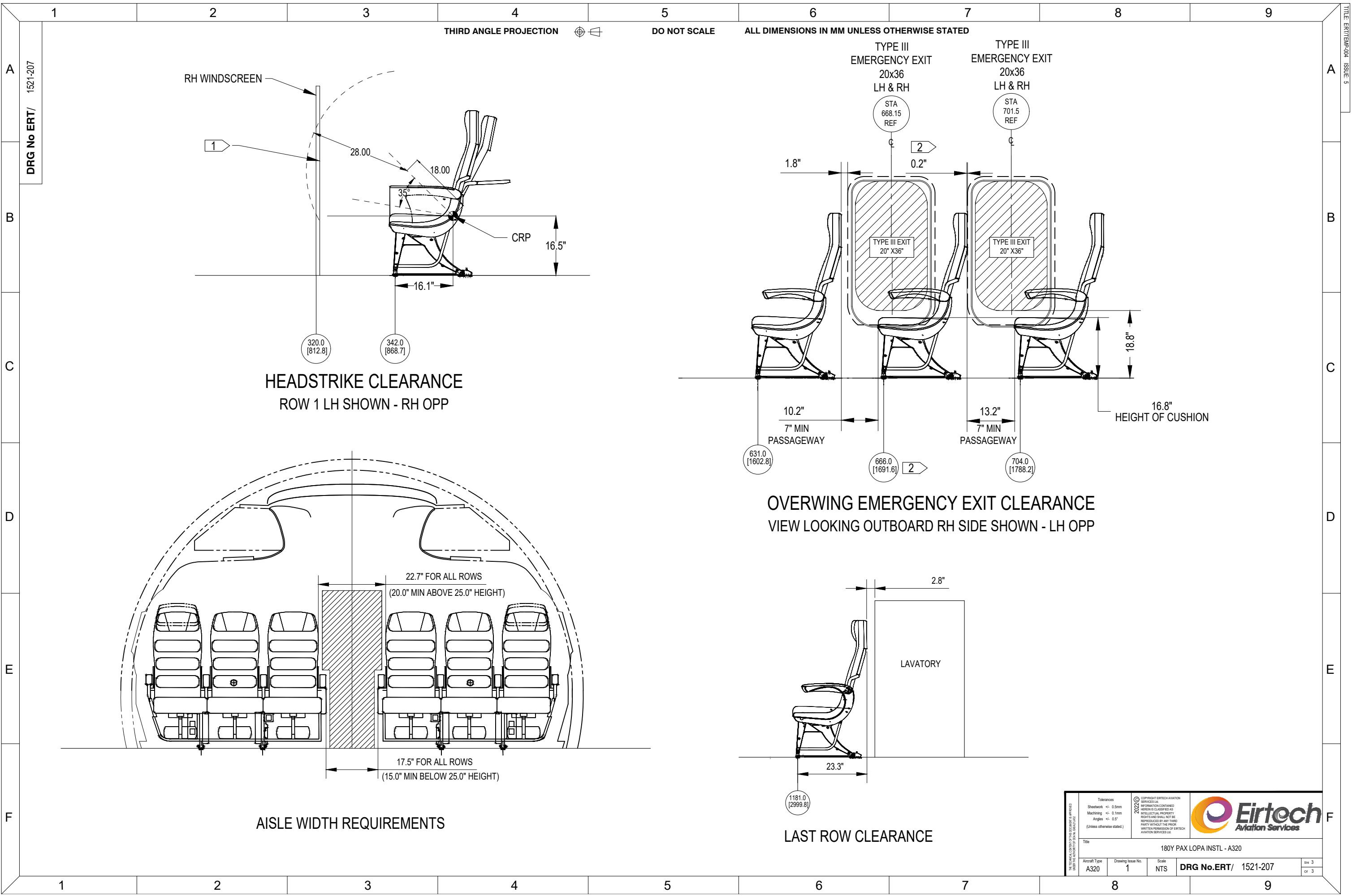
LEGEND	
■	= NO RECLINE
●	= 2° LIMITED RECLINE
▲	= 3° LIMITED RECLINE
IAT	= IN-ARM TABLE
NOA	= NO OUTBOARD ARMREST
NR	= NARROW SEAT
XNR	= EXTRA NARROW SEAT
NOS	= NARROW OUTBOARD SEAT
F/A	= FLIGHT ATTENDANT SEAT
○ IN [CM]	= STATION POINT REF

<small>THE TECHNICAL CONTENT OF THIS DRAWING IS APPROVED AND THE ACCURACY OF THE DATA IS GUARANTEED.</small>	<small>Tolerance Sheetwork ± 0.5mm Machining ± 0.1mm Angles ± 0.5° (Unless otherwise stated)</small>	<small>© 2022 EIRTECH AVIATION SERVICES LTD INFORMATION CONTAINED HEREIN IS CLASSIFIED AS PROPRIETARY AND SHALL NOT BE REPRODUCED BY ANY THIRD PARTY WITHOUT THE PRIOR WRITTEN PERMISSION OF EIRTECH AVIATION SERVICES LTD</small>	
	Title: 180Y PAX LOPA INSTL - A320		
Aircraft Type: A320	Drawing Issue No: 1	Scale: NTS	DRG No.ERT/ 1521-207
			Shr: 2 or 3

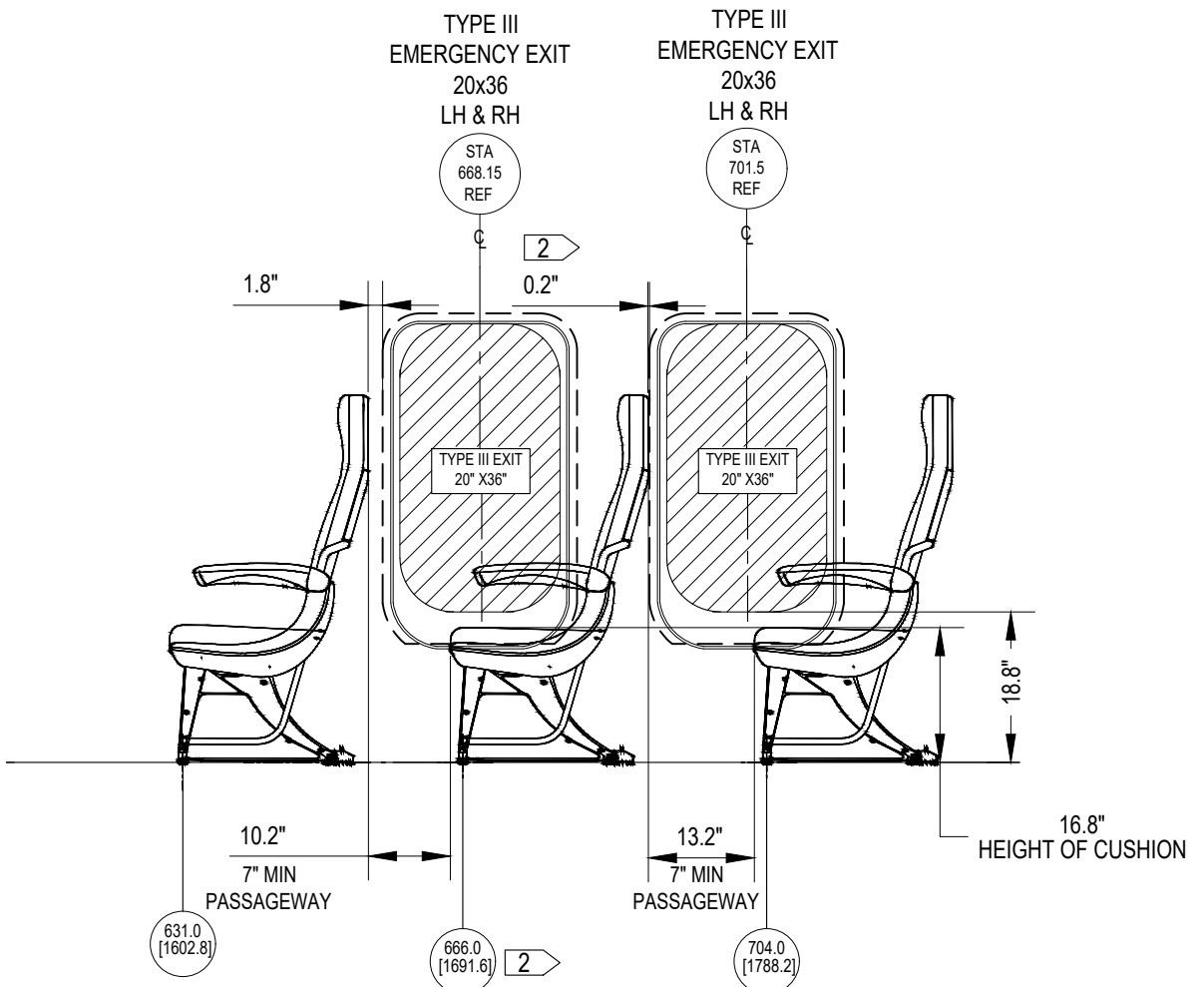
THIRD ANGLE PROJECTION

DO NOT SCALE

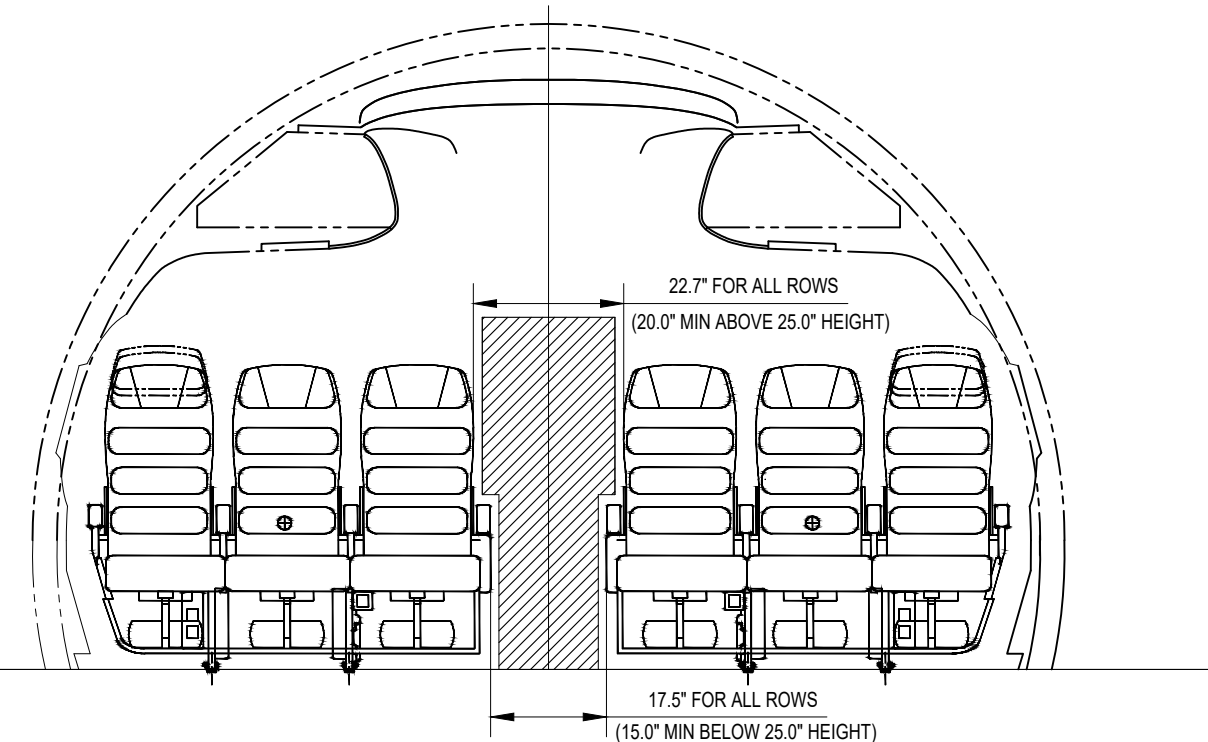
ALL DIMENSIONS IN MM UNLESS OTHERWISE STATED



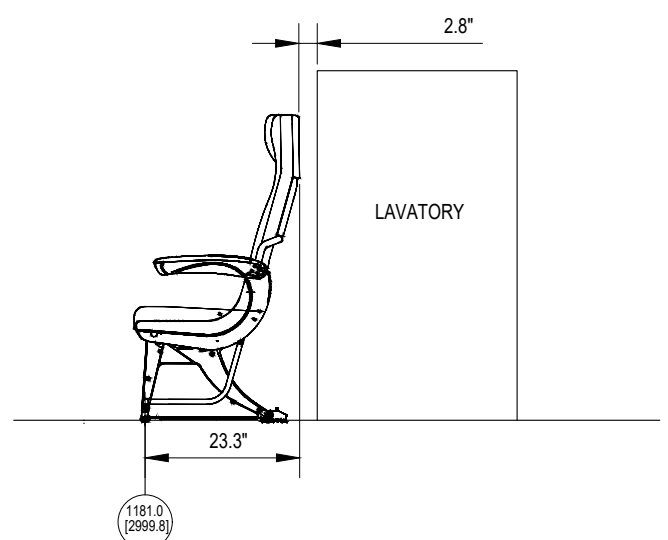
HEADSTRIKE CLEARANCE
ROW 1 LH SHOWN - RH OPP



OVERWING EMERGENCY EXIT CLEARANCE
VIEW LOOKING OUTBOARD RH SIDE SHOWN - LH OPP



AISLE WIDTH REQUIREMENTS



LAST ROW CLEARANCE

Title 180Y PAX LOPA INSTL - A320		Aircraft Type A320		Drawing Issue No. 1		Scale NTS		DRG No.ERT/ 1521-207		Sheet 3 of 3	
-------------------------------------	--	-----------------------	--	------------------------	--	--------------	--	----------------------	--	--------------------	--



Tolerances:
 Sheetwork +/- 0.5mm
 Machining +/- 0.1mm
 Angles +/- 0.5°
 (Unless otherwise stated)

2022 © COPYRIGHT EIRTECH AVIATION SERVICES LTD
 INFORMATION CONTAINED HEREIN IS CLASSIFIED AS INTELLECTUAL PROPERTY RIGHTS AND SHALL NOT BE REPRODUCED BY ANY THIRD PARTY WITHOUT THE PRIOR WRITTEN PERMISSION OF EIRTECH AVIATION SERVICES LTD